

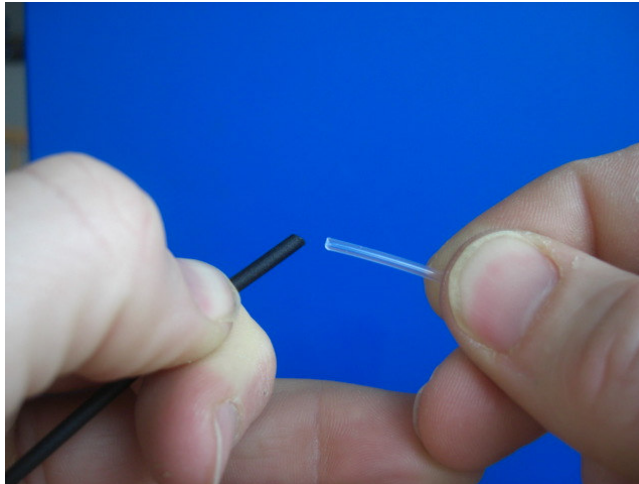


THE CANADIAN TUBE FLY COMPANY

www.canadiantubeflies.com

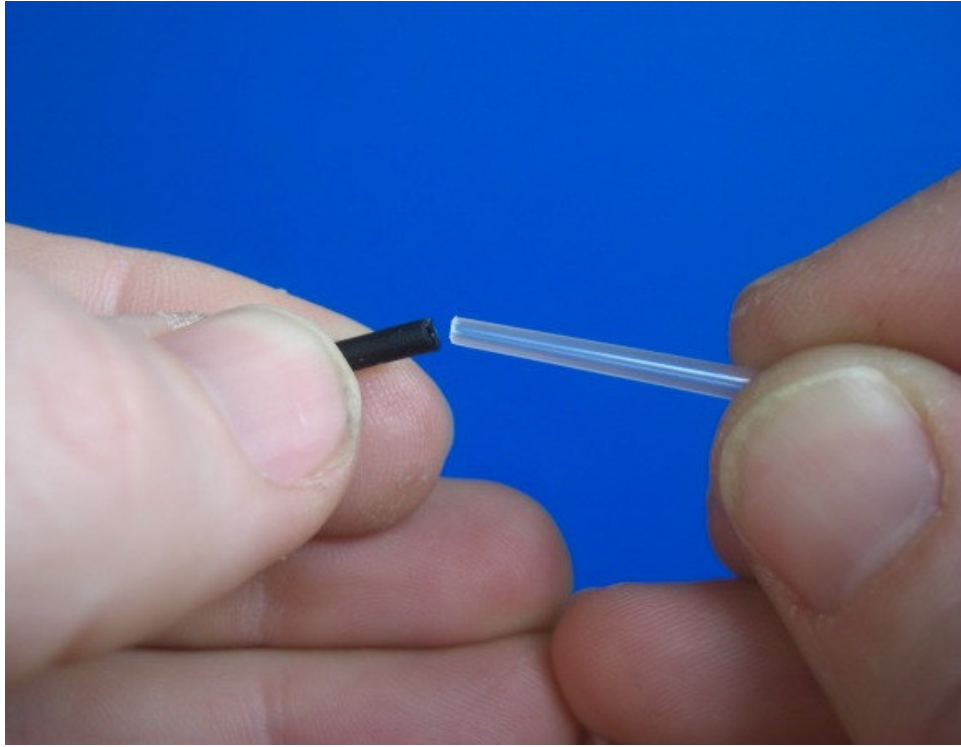
The Black and Blue Leech

A Wiggle Tube by Stuart Anderson

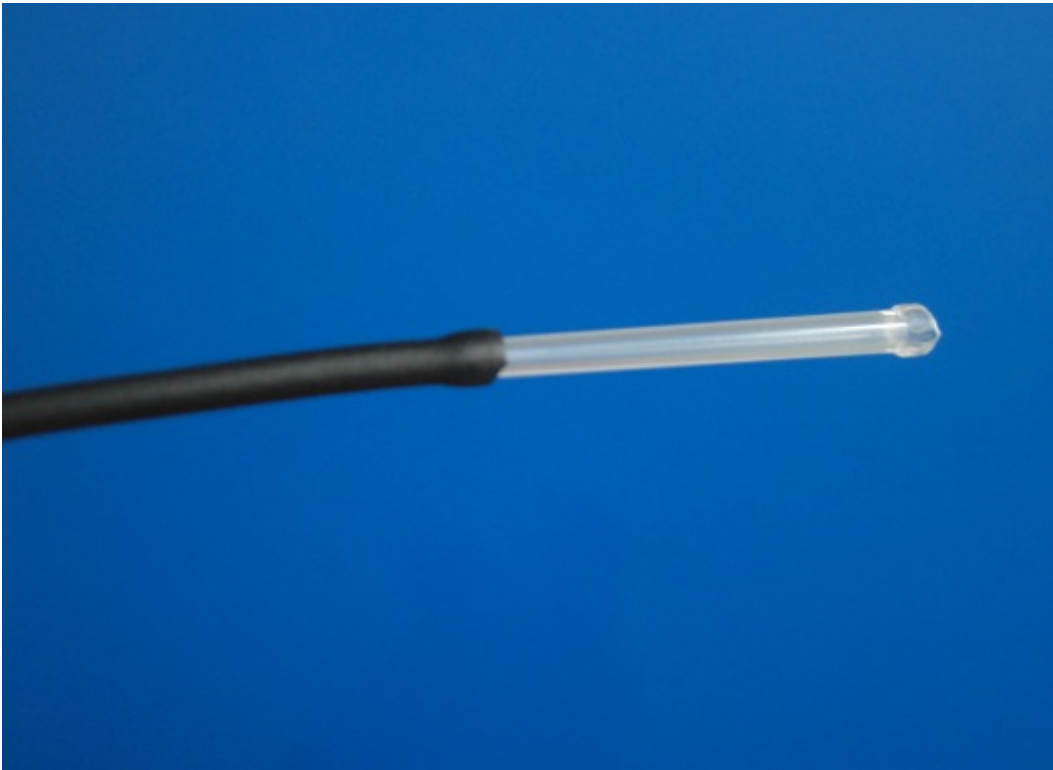


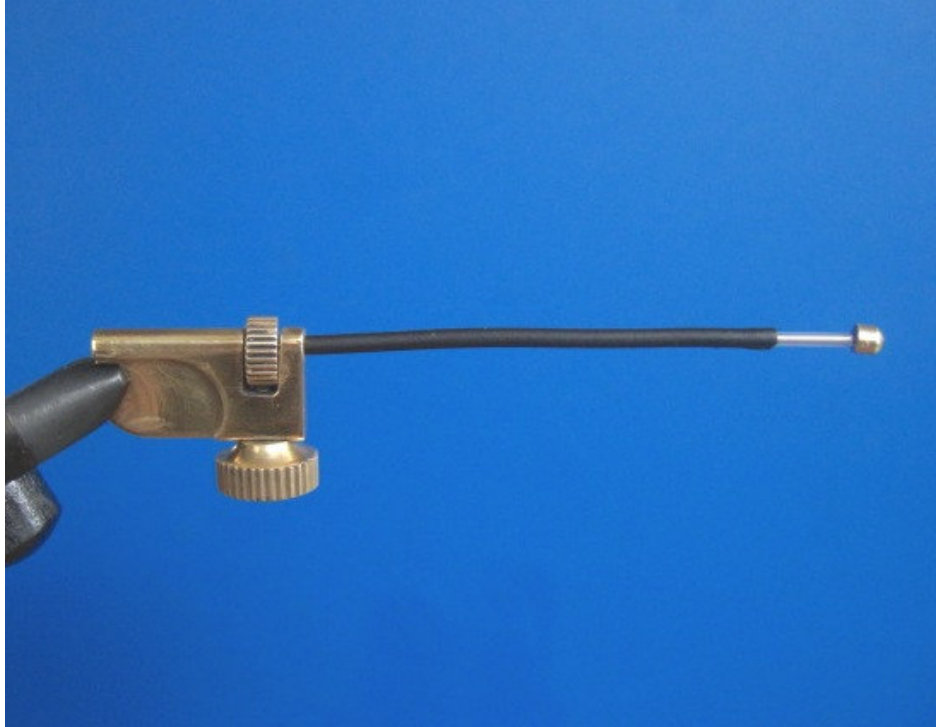
Insert a small section of Inner Lining Tube into A longer section of Wiggle Tube. Sometimes I will even rub the tip of the liner tube on the side of my nose to get a thin film of oil on it (an old fly fisherman taught me that trick) and then twist the liner onto the Wiggle Tube. The best part is that because it's tight, there is no need for glue or Zap
A Gap



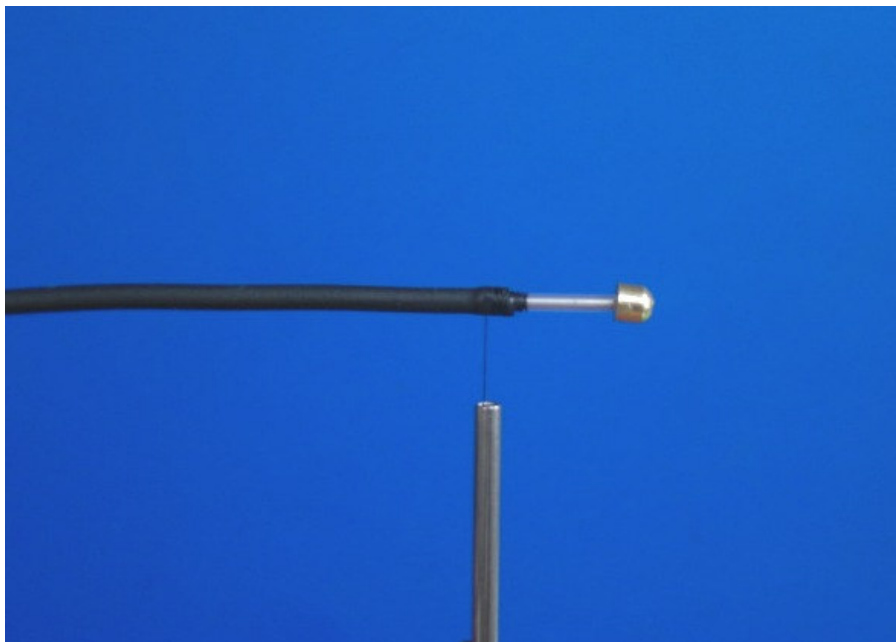


Instead of using Inside Liner Tube, you can also use a 33mm Tapered Tube.

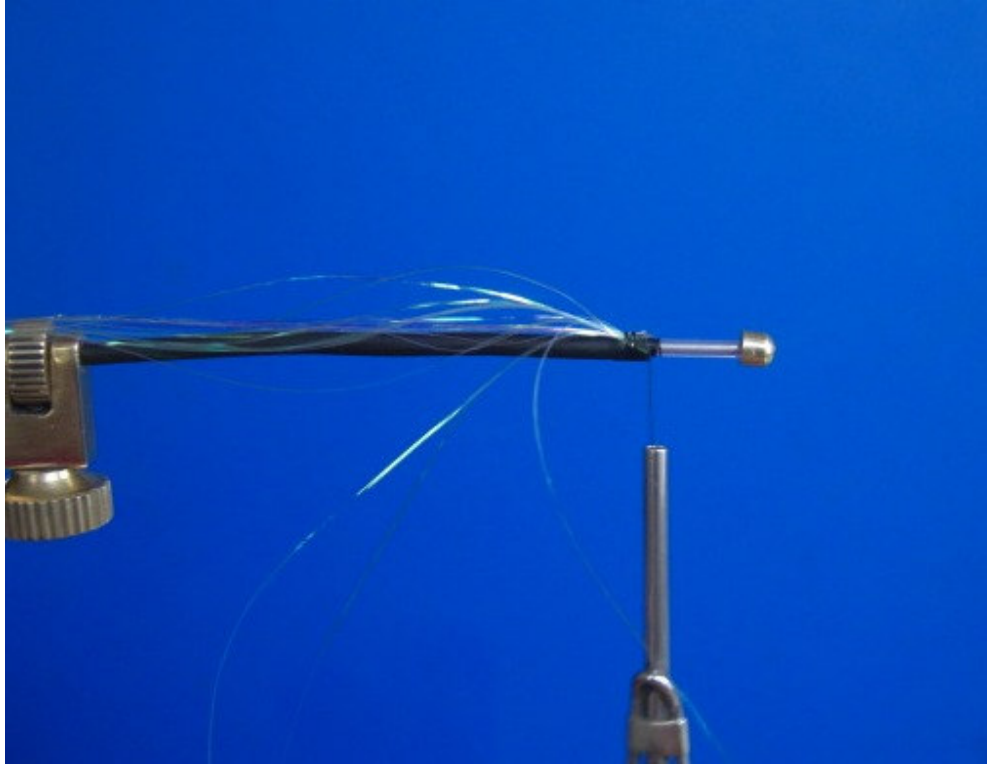




Cut the Inside Liner Tube or Tapered Tube so that you have around $\frac{1}{2}$ - $\frac{3}{4}$ of an inch outside of the Wiggle Tube. It is **IMPORTANT** that you do not tie directly on the Wiggle Tube. It will compress and become stuck on the mandrel. All tying is done on the hard liner tube or Tapered Tube.



Tie on to the front of the Wiggle Tube. This will permanently attach it to the Liner tube or Tapered Tube.



Tie in a few strands of pearlescent flashabou.



Tie in a few more strands of pearlescent flashabou on the underside.



Tie in a long bunch of Pink Icelandic Sheep.



Do the same on the underside of the tube.



Tie in a few strands of blue flashabou on top.



Do the same on the bottom.



Tie in a bunch of Black Icelandic Sheep or Natural Bison hair. Make sure it is slightly longer than the pink to give the fly a nice taper.



Do the same to the bottom.



Tie in some more blue flashabou.



Add on a collar of large, silver doctor blue, teal feather.



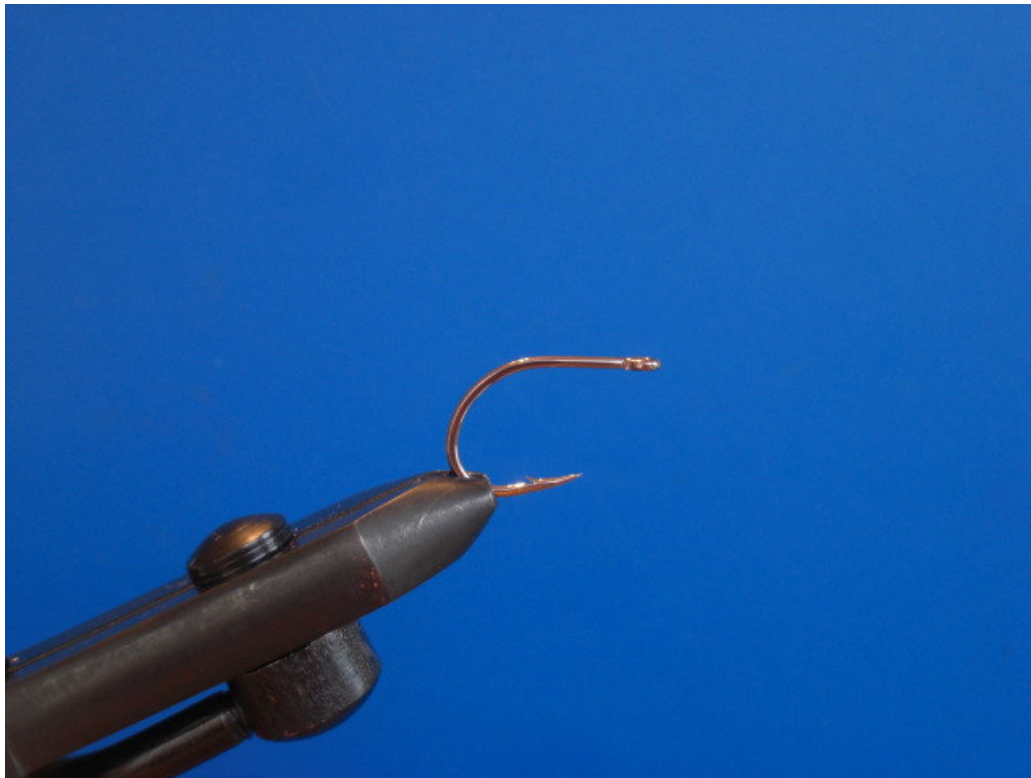
Add the Jungle Cock cheeks. Remove from mandrel.



Trim the end of the tube. Be sure to leave 1/16" to melt into a nice "lip".



Pinch the tube and tube liner between your thumb and index finger and slowly twist it next to (not directly in) an open flame.



Place your hook of choice into your vise.



Add a wing of Black Icelandic Sheep or Natural Bison.



Do the same on the bottom of the hook.



Add some blue flashabou to the top.



Do the same on the bottom.



Tie in a long bunch of Pink Icelandic Sheep.



Do the same to the bottom.



Add on a collar of large, silver doctor blue, teal feather.



Pull back the fibers of teal.



Now attach the trailing hook to the end of the Wiggle Tube. The Wiggle Tube will snugly fit over the eye of the hook. You now have a snake or leach fly that has incredible movement in the water and can be over 8 inches in length.



Some of our other Wiggle Tubes.